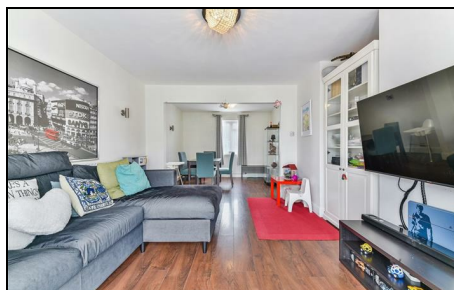


Fleming Mead Mitcham, CR4 3LU

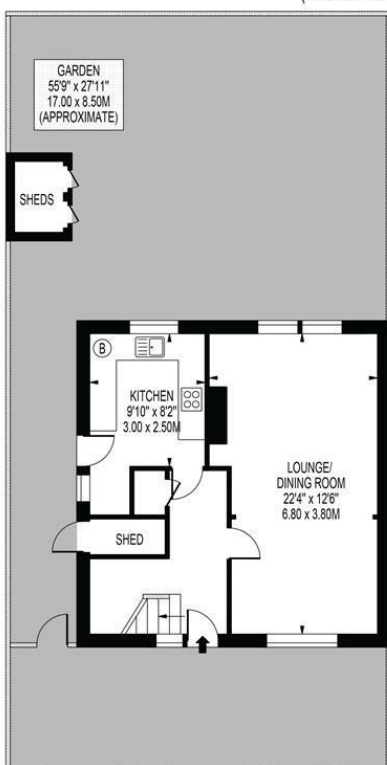
Offers In Excess Of £600,000 Freehold



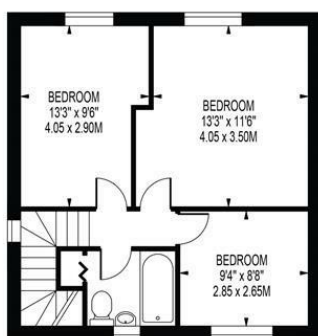
A spacious three double bedroom, semi-detached house located just a short walk away from Colliers Wood Underground Station and Tooting National Rail Station. The property comprises of an open plan reception / dining room, large private south facing rear garden, three double bedrooms and a family bathroom. This light and airy property would be ideal for a family looking to be close to transport links and good local schools and further benefits from no onward chain.

FLEMING MEAD

APPROXIMATE GROSS INTERNAL FLOOR AREA: 932 SQ FT - 86.60 SQ M
(EXCLUDING SHEDS)



GROUND FLOOR

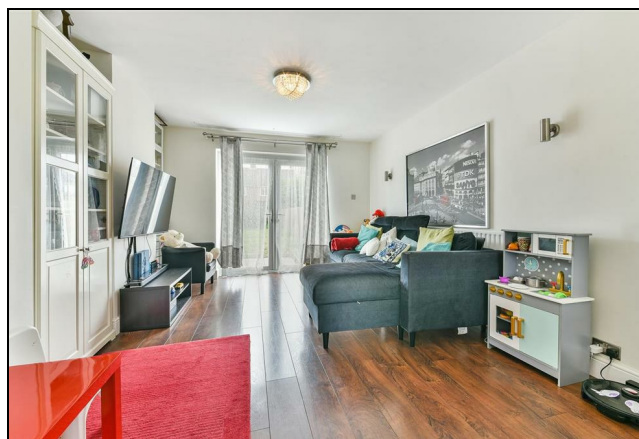


FIRST FLOOR

FOR ILLUSTRATION PURPOSES ONLY

THIS FLOOR PLAN SHOULD BE USED AS A GENERAL OUTLINE FOR GUIDANCE ONLY AND DOES NOT CONSTITUTE IN WHOLE OR IN PART AN OFFER OR CONTRACT. ANY INTENDING PURCHASER OR LESSEE SHOULD SATISFY THEMSELVES BY INSPECTION, SEARCHES, ENQUIRIES AND FULL SURVEY AS TO THE CORRECTNESS OF EACH STATEMENT. ANY AREAS, MEASUREMENTS OR DISTANCES QUOTED ARE APPROXIMATE AND SHOULD NOT BE USED TO VALUE A PROPERTY OR BE THE BASIS OF ANY SALE OR LET.

- Three Double Bedrooms
- Off Street Parking
- Large Private Garden
- Freehold
- No Onward Chain
- Ideal For A Family
- Nearby Transport Links
- EPC Rating : D
- Merton Council Tax Band : D



Energy Efficiency Rating

	Current	Potential
Very energy efficient - lower running costs		
(92 plus) A		
(81-91) B		84
(69-80) C		
(55-68) D	64	
(39-54) E		
(21-38) F		
(1-20) G		
Not energy efficient - higher running costs		
England & Wales	EU Directive 2002/91/EC	

For Free Mortgage Quote and Best Mortgage Rates, call an Ellisons Mortgage Advisor on 020 8544 0518



Although these particulars are believed to be correct, their accuracy is not guaranteed and they do not form part of any contract.

Celebrating 30 years of successful Sales and Lettings in Merton

